



This design was inspired by flowers often used on Scottish samplers. The stitched piece fits in a Tuckable Shoulder Bag from *Old Colonial Designs*. You can see a color photo of the stitched design in a blue shoulder bag at [www.withmyneedle.com](http://www.withmyneedle.com). You can also frame this design, put it on a box lid, or make it into a small pillow or pincushion.

**Model Information**

**Linen:** 32-count summer khaki  
**Stitch Count:** 61 wide by 50 high  
**Stitched Area:** 3-7/8 by 3-1/8 in  
**Overdyed threads:** Olde Willow Stitchery

Symbol	Model Thread
×	Byberry Township Green
○	Shacklewell Wine
☆	Society of Friends Gold
↑	Yorkshire Blue

**General Directions**

Each square on the chart represents two linen threads. Unless otherwise specified, cross stitch this design using two strands of thread.

Overdyed thread changes color along its length. So, when using overdyed threads, you should normally use matching strands and complete each stitch individually rather doing a row of half stitches and crossing them later. This is

necessary so that the color doesn't change too much within any single, completed stitch. Use this method everywhere except on the vase. There, we want to create a mottled appearance: Using two unmatched strands of thread, put in the bottom half of all the cross stitches of one row, and then reverse your direction and complete all the cross stitches in that row.

**Special Directions**

**Carnations.** Fill the carnation petals with satin stitches using two strands of Shacklewell Wine. The lines on the chart show you how long to make each stitch. Backstitch the outline of the petals with one strand of Shacklewell Wine. The small "×" symbols (four per square) at the base of each carnation indicate tent stitches using one strand of Byberry Township Green.

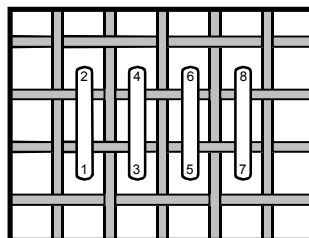
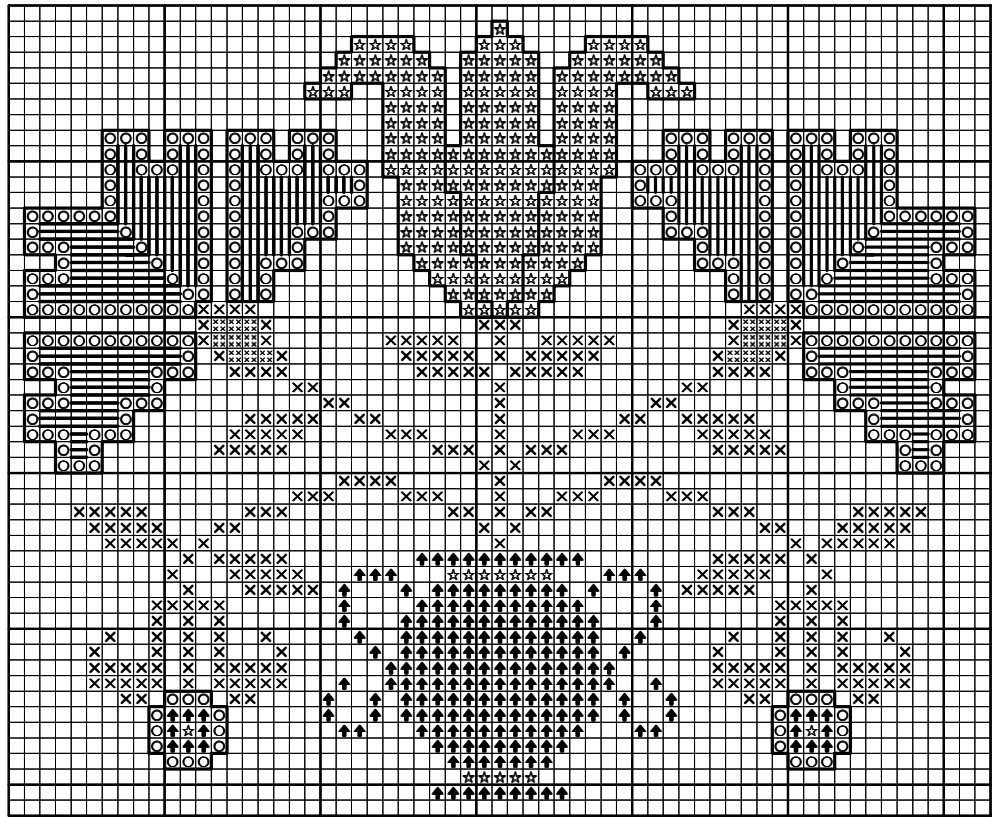
**Other flowers.** Put a smyrna cross in the center of each small flower. Backstitch the solid lines on the tulip and small flowers using one strand of Shacklewell Wine.

**Leaves.** Stitch the leaves attached to the stems in closed herringbone with two strands of Byberry Township Green.

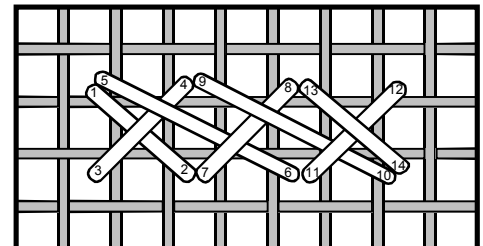
**Vase.** After stitching the main part of the vase, stitch two rows of closed herringbone stitches in the areas indicated by the symbol "☆".

**Credits.**

**Threads:** Olde Willow Stitchery; 117 Gene Ct.; Brunswick, GA 31525  
**Linen:** Zweigart; Jean Toggit, Ltd.; 262 Old New Brunswick Rd, Unit E; Piscataway, NJ 08854  
**Shoulder Bag:** Old Colonial Designs; P. O. Box 704, Marshfield, MA 02050  
**Stitch Diagrams and Editing:** T. L. Chester

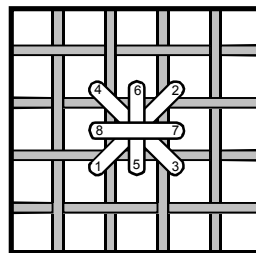


Satin Stitch

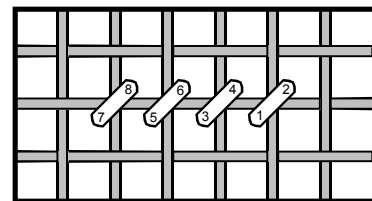


Closed Herringbone Stitch

Steps 1-2 create a short stitch necessary to begin a row. Steps 3-6 establish the pattern that is repeated across the row. Steps 13-14 show how to create the short stitch needed to end the row.



Smyrna Cross



Tent Stitch

Ask your local needlework shop about other fine designs from...



This chart may be reproduced by needlework shops for free distribution to customers but may not be sold.

© 2003 Ellen Chester

